

THOMPSON MONUMENTAL MASONS

Memorials can also be personalised by adding engraved art work such as the simple Red Rose on or a Service Crest or Scotch Thistle. Almost anything can be used, all we need is a photo or drawing of what is required. Another way to personalise a memorial is to place a photo ceramic.



Ceramic Photos



(W) Mountains



Bush



(I) Clouds



Coast



(T) Sunset



Aurora

Why We Recommend Granite

A monumental mason uses granite because this is a material that experience has proved to be more weather-resistant and better able to accept a clear inscription (including expert additions at a later date if necessary) than any other single material at such a reasonable cost.

The potential of glass-fibre and other reinforced plastics memorials, or reconstituted and concrete compounds, and of bronze plaques, has been closely investigated.

Research by independent laboratories into the characteristics of such memorials has led to the single conclusion – that none of these offer a satisfactory alternative to natural quarried granite for this particular purpose.



PO Box 162, HOKITIKA
Telephone (03) 755 7993

THOMPSON

Monumental Masons

Headstones



Office, Workshop &
Showroom

86 Gibson Quay, Hokitika
www.thompsonfd.co.nz

Before

New Granite Memorials

A Granite Memorial can fulfil the wish for family to have a tangible and individual form of commemoration of a loved one. An individual granite memorial gives a place to visit and offers a real focus for grief as well as a lasting token of respect.

Ranging from a Simple Granite Panel, Traditional Lawn Headstone or Specially Designed Memorials

Personalised Design & Draft Proof Service of Artwork & Inscription

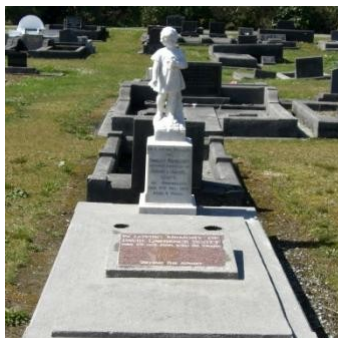
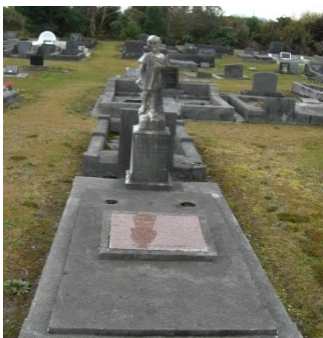
Renovation & Restoration of Older Family Grave

Addition of Second Inscription

Moss & Lichen Removal

Re-gilding & Repainting of Inscriptions

Restoration Of Old Marble Monument



A Small Selection Of Different Monuments



A Selection Of Different Shaped



Saddle Shape, Polished Edges



Book Shape, polished Edges

Monuments



Wave Shape, polished Edges



Camber Shape, Polished Edges

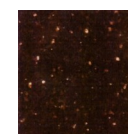
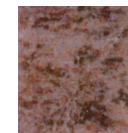


Saddle Shape, Polished Edges



Dual Shape, Polished Edges

A Small Selection Of Granite Colours

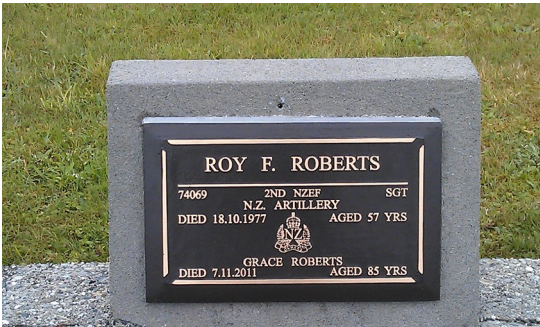


GRANITE PANELS

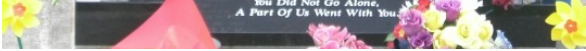
Over the years, we have had many families contact us wishing to mark the final resting place of one of their forebears. The brief has most often been for something permanent, not too large and not too expensive. Some have requested a bronze plaque while others are happy to be guided by us.

If we are working to a budget bronze is often too expensive when compared with a granite panel of the same size. Also, over time the protective coating on a bronze plaque will wear off, leaving it a grey green colour as shown in the photos below.

New Bronze Plaque



Old Bronze Plaque

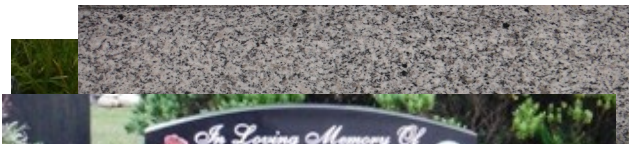


Our recommendation and preference is to use granite, a natural rock product that has only been altered from its original form by cutting shaping and polishing.

The inscription is sandblasted into the polished granite panel and can be left with a natural rock finish or painted with an etch primer undercoat then a two pack long life white enamel finish.

Black Granite Panel set in a recumbent position on a small concrete berm set at ground level (easy mowing and maintenance for Cemetery Staff)

Average cost for this package \$800 incl



Three Options On Inscription Finish

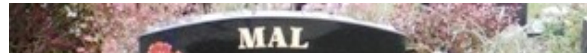
Sandblasted Finish



Embossed Finish



Background is sandblasted and the text left as polished granite



The Fleming memorial is an all polished black granite camber shaped top headstone (600x450x75mm) set on a matching black granite base (800x350x100) with two vases. There is the option to have one vase in the centre or no vases. Inscription is finished in two pack long life white enamel.

Total cost for a memorial similar to this but without the ceramic photo is around \$2,600.00

Cremation Garden Memorials



The Porter memorial is also an all polished black granite camber shaped top memorial and is slightly smaller than the Fleming headstone at 500x400x75mm. Offset to the left to allow for a vase at the right hand end of the base, this base is also slightly smaller at 760x280x100mm

Cost for this option is around \$2,10.00



The Banks memorial is similar in size to the Porter headstone and base but with the variation of a wave shaped top on the headstone.

Cost for this option is slightly more at around \$2,300.00

Cost to purchase a plot in the Cremation Garden area, through us is \$525.00

There are many other shapes, sizes and different coloured granite headstones available. Please feel free to contact us should you require further information or clarification on any point.